

Zero Discharge

Water Tech **SCALE-SAFE** Anti-Scale Systems

The Problem

Calcium creates scale in pipes, on appliances and other plumbing surfaces. This leads to higher heating and energy costs and expensive repairs to appliances, such as ice machines, coffee makers, dishwashers and cooling towers in commercial buildings.



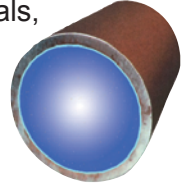
Scale can also be a source of bacteria to grow, which can be a health concern in drinking water applications.

Calcium, on the other hand, is important to human health, and supplements are recommended if Calcium is reduced or totally void in one's diet.



The Solution

Water Tech Anti-Scale systems transform Calcium ions into Calcium crystals, which are stable and cannot attach to pipes, surfaces, hardware or heat exchanger components. The crystals are so small they are easily rinsed away by the water flow.



Green Technology

Benefits

- Scale is virtually eliminated!
- Aids in removing existing scale.
- No costly repairs to appliances due to scale.
- **No Salt.**
- No brine tank.
- **No backwash.**
- Saves water!
- **No electricity.**
- Easy installation.

Note: For satisfactory results recommended flow rates and model sizing must be followed.

Commercial Models

Part Number	Tank Size (Inches)	Tank Type	Pipe Size (Inches)	Media Liters	Gravel Lbs.	Service Flow GPM	Floor Space L x W x H (Inches)	Ship Wt. (Lbs.)
M8407-COM	7x44	Standard	1"	2.5	NA	10	10x10x51	30
M8408-COM	8x44	Standard	1"	3	NA	12	11x11x51	32
M8409-COM	9x48	Standard	1"	4	NA	16	12x12x42	35
M8410-COM	10x54	Standard	1"	5	NA	20	13x13x61	37
M8412-COM	12x52	Standard	1"	7.5	NA	30	15x15x59	45
M8414-COM	14x65	Standard	2"*	12.5	NA	50	15x15x72	77
M8416-COM	16x65	Standard	2"*	19	NA	75	17x17x72	138

*Units with 2" plumbing have a bottom inlet and top outlet.

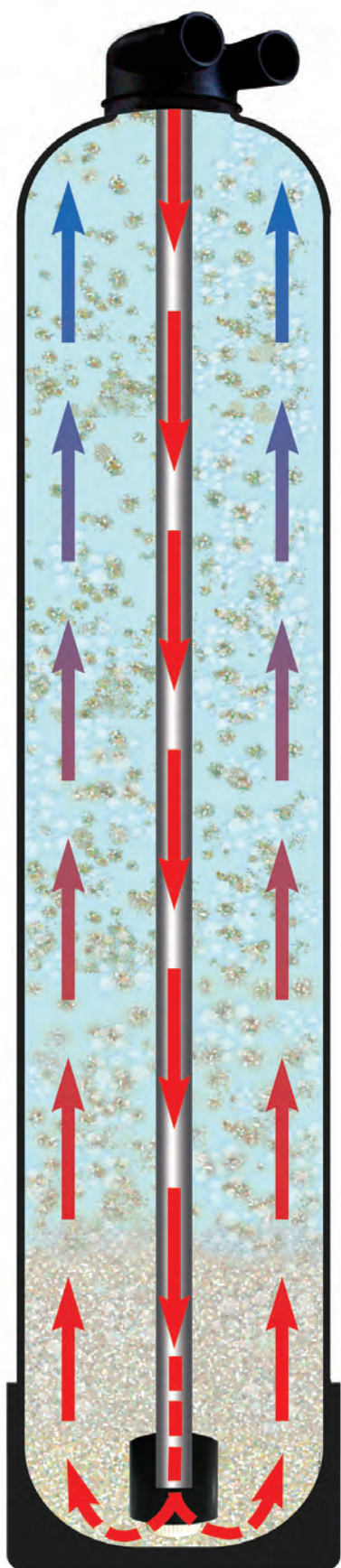
Note: Commercial systems are designed for long runs and high usage. By-pass valves are optional. Flow rates are based on 25 grains hardness, maximum. Consult dealer for sizing in higher levels. Pre-treatment for sediment, Iron, Hydrogen Sulfide, Manganese, hydrocarbons and copper may be required depending on conditions. Install systems in new facilities with copper pipe after one month of water use.

IMPORTANT: Pre-treatment is recommended for high feedwater Iron, H₂S, and Cl₂. (What others may not tell you).

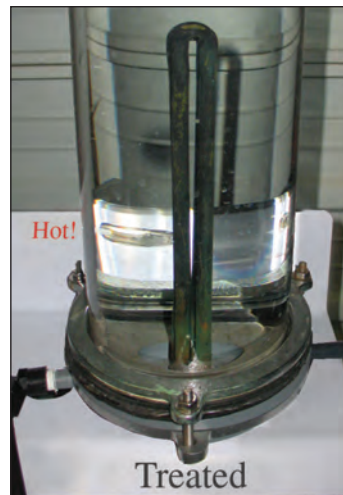
Water Tech - Phone: (787) 601-6699 - Fax: (787) 284-2841 - admin@watertechgroup.com

Proven Results!

Lab tests conducted at our test facility, located in San Antonio, Texas indicate Scale Safe anti-scale media virtually eliminates new scale formation and aids in the removal of existing scale. Tests were conducted in water temperatures to 140°F and hardness levels of 17 grains per gallon. Photos (below) show scale formation in untreated water and no scale in the ScaleNet treated water.



Scale Build-Up
(In untreated water).



No Scale!
(With ScaleSafe treatment).

New!



ScaleSafe Cartridges

We also supply cartridges with ScaleSafe anti-scale media for low flow applications.

PART NUMBER	SIZE	FLOW (MAX.)
SNC2510	2.5"x 10"	1 gpm
SNC2520	2.5"x 20"	2 gpm
SNC4510	4.5"x 10"	3 gpm
SNC4520	4.5"x 20"	4 gpm