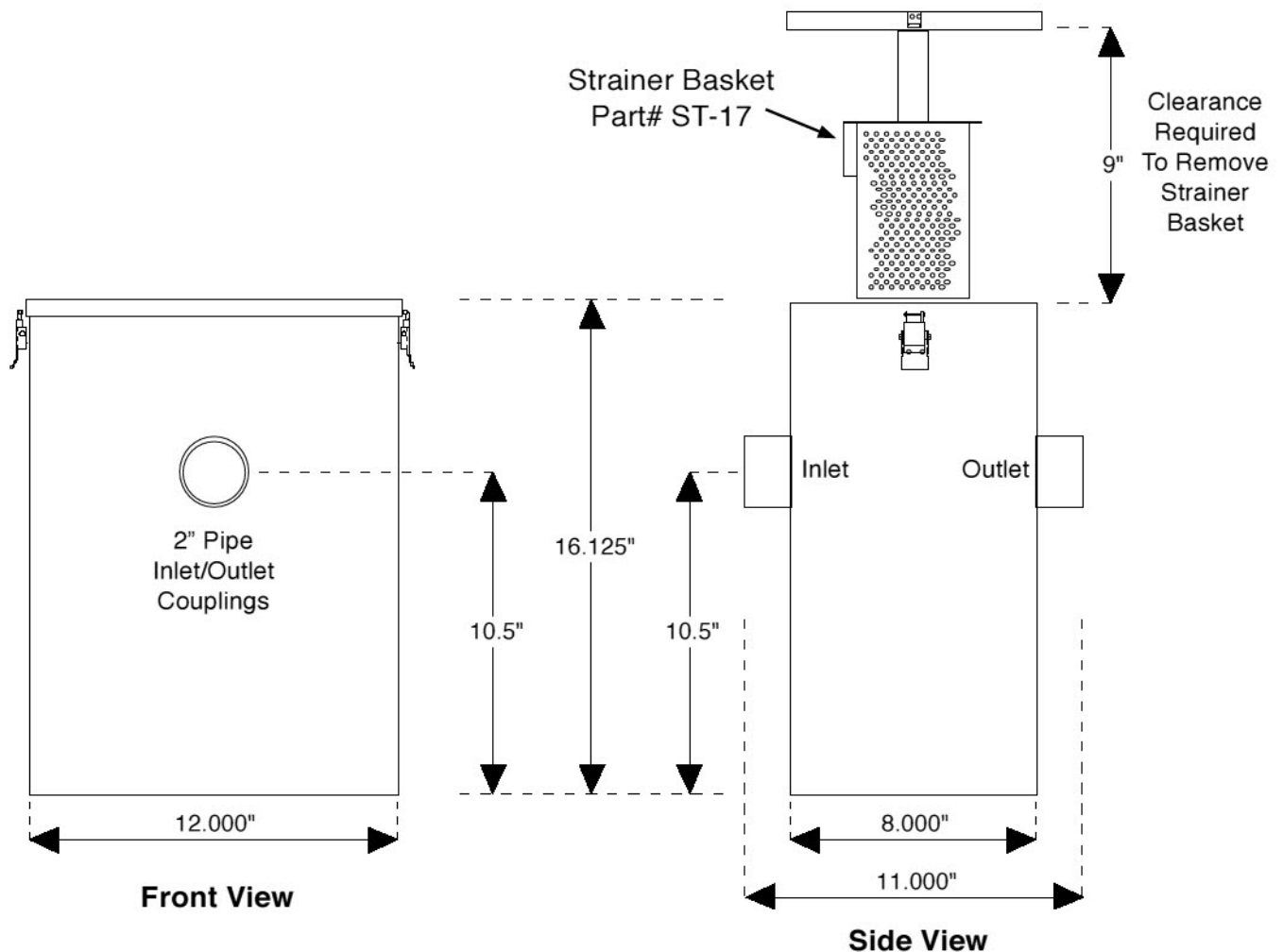


ESU-1 External Solids Strainer is designed for locations that require a separate external solids strainer to be installed in front of a grease interceptor. The ESU-1 separates & collects coarse solids such as rice, cole slaw and other similar foodstuffs (larger than 0.125" / 3.175 mm in diameter). The removable strainer basket allows the customer to empty the collected solids directly into a trash receptacle. The ESU-1 External Strainer is constructed of durable stainless steel and offers a simple solution for solid waste disposal. The ESU-1 couples with Big Dipper W-200-IS, W-250-IS & W-250-AST Point Source Automatic Grease & Oils Removal Units.

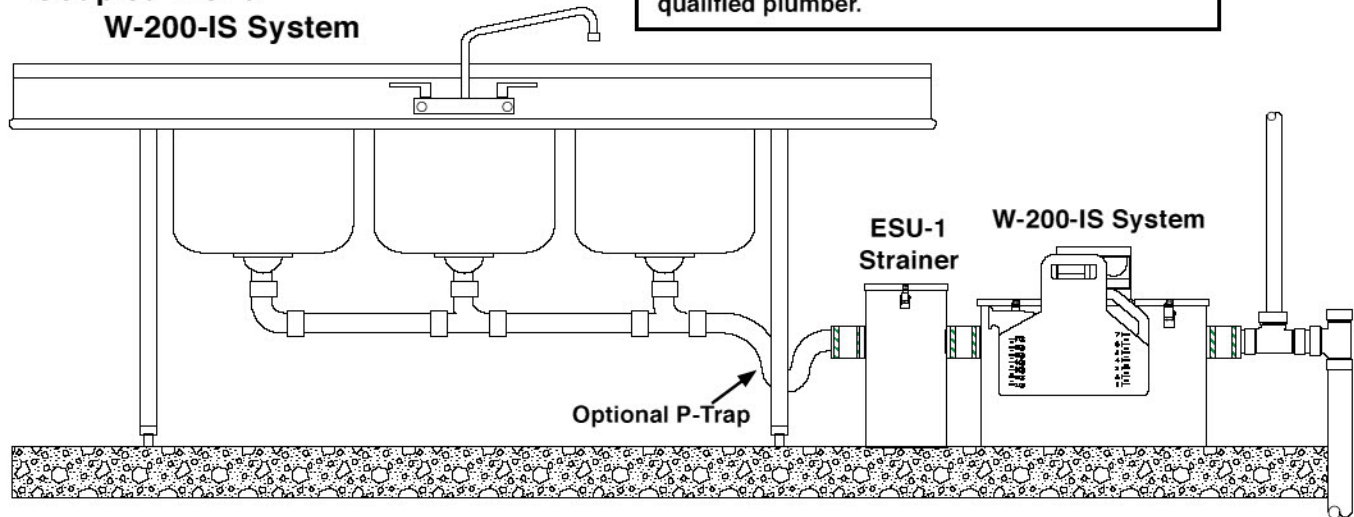
ESU-1 External Strainer Features:

- **Stainless Steel Construction**
- **Removable Stainless Steel Strainer Basket**
- **1.16 Gallon Basket Capacity**



ESU-1 Servicing a Three Compartment Sink Coupled with a W-200-IS System

NOTE: Drawing for reference only. Equipment must be installed in compliance with all applicable laws, regulations and codes, including plumbing codes. Installation should be performed by a qualified plumber.



ESU-1 Servicing a Pre-Rinse Sink Coupled with a W-200-IS System

